

Mini User Guide

Adobe™ Fetch™ Browser

What is Adobe™ Fetch™?

Adobe Fetch is a multi-user, media-management application from Adobe Systems Incorporated that helps you make effective use of collections of digital media (images, sounds, movies, animation files, and so forth) on your own computer and across a network.

With the Browser version of Fetch and the Browser catalog on this CD-ROM, you can quickly and easily browse and use your media collection. Fetch lets you scroll through a gallery of thumbnails for a quick visual view of what's available, or search for images by filename, keyword, file type, or volume. Once found, image files can be previewed, played, printed, or copied for use in other documents.

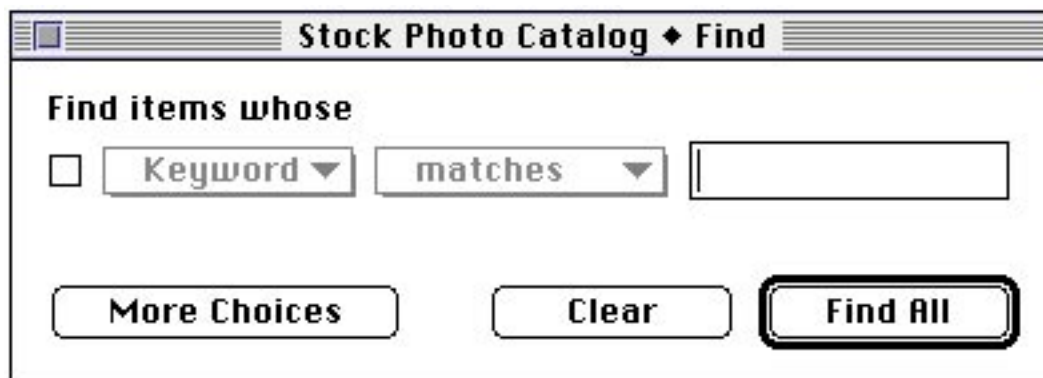
Among the features of Fetch that you will appreciate as you use the catalog are these:

- Searching is fast and easy.
- You can name and save frequently used searches.
- You can copy selected items, or simply references to the items, to the Clipboard or a Scrapbook, or place them directly in another document.

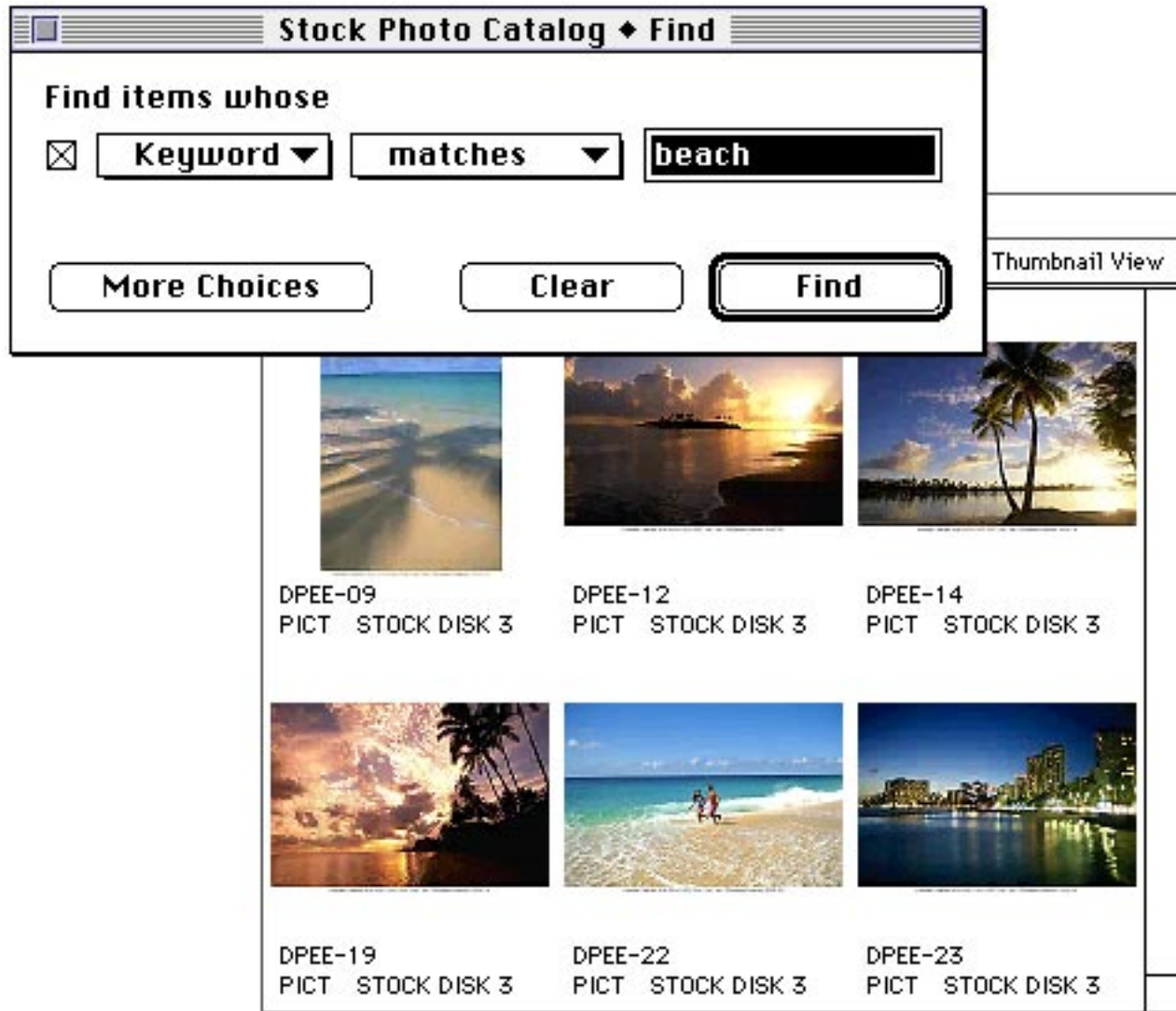
The Browser version of Fetch can only open previously created Browser catalogs, such as the one on this CD-ROM; you cannot use it to create or modify catalogs. For information about purchasing the full retail product to catalog your own images and other media files refer to the Fetch Order Form on this disc or call Adobe Customer Services. In the United States and Canada, call 1-800-628-2320. Elsewhere, contact your local Adobe dealer or distributor.

Using the Catalog

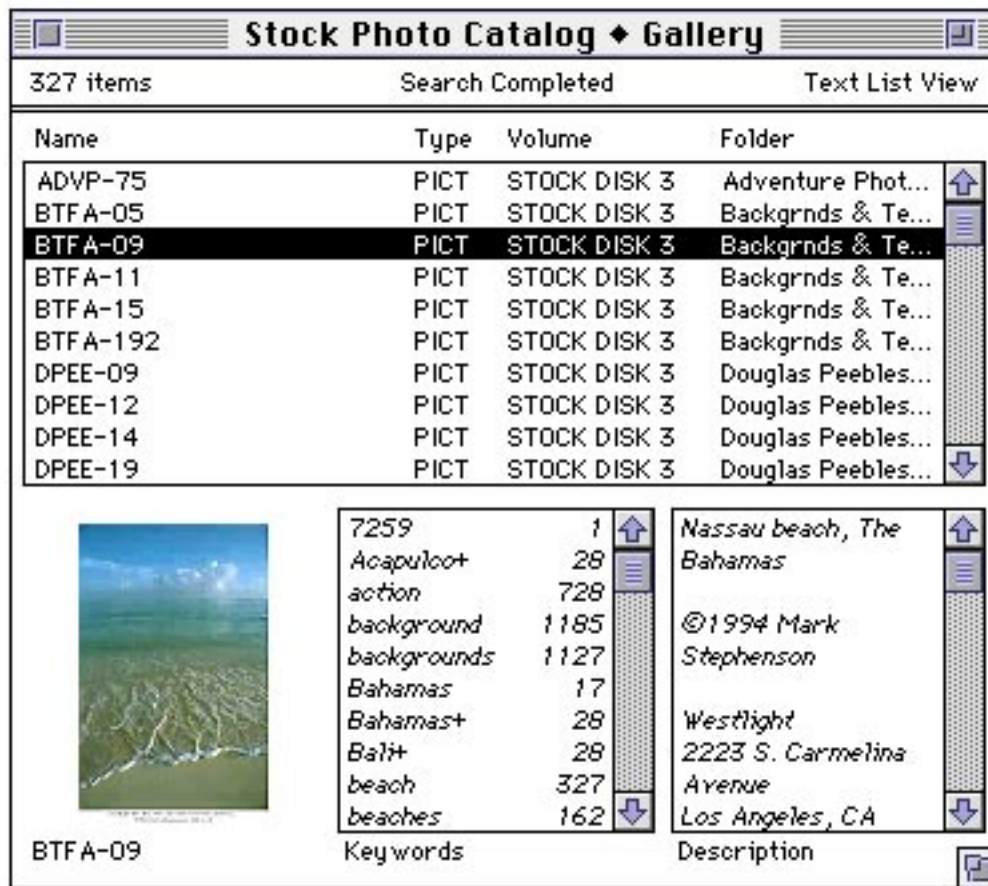
Using the Find window in Fetch, you can search by any combination of filename, keyword, file type, or volume. Choose "Find" (Command + F) from the Search menu to open the Find window or bring it to the front if it's already open.



You can display the entire catalog at once (“Find All”), search on a single attribute, or combine attributes to narrow your search. Fetch displays found items in the Gallery window. You can resize the window or use the scroll bars to scroll to additional items in the window.



You can also view the items as a text list that gives information on filename, file type, and other attributes of the items in the catalog (choose “Text List” from the View menu or double-click “Thumbnail View” in the upper right corner of the Gallery window).



In the Gallery window, you can:

- click an item (its thumbnail or text) to select it.
- double-click an item to open a Preview window, where you can zoom in or out or copy all or part of the item to the Clipboard for use in another document.
- double-click the text below a thumbnail to get more information about the item.

In the Pasteboard window, you can temporarily store items retrieved from multiple searches.

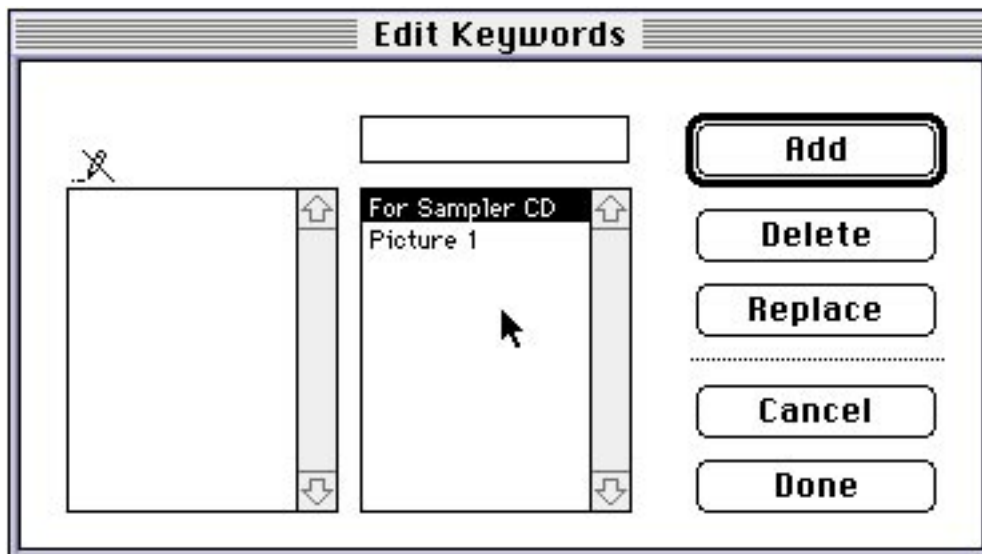
Using the “Save As Project...” command on the Item menu, you can name and save a group of items as a Fetch “project” (for example, items needed for work in progress or items used frequently) You can select the items in either the Gallery or Pasteboard windows.

Use the commands on the Edit and Item menus to work with items selected in the Gallery or Pasteboards windows.

Adding Keywords and Descriptions

To see if the publisher of this CD-ROM has allowed for user editing of keywords and descriptions, select any item in the Gallery window and open the Edit menu. If both “Keywords” and Description” are dimmed, you cannot add to the keywords and descriptions already in the catalog. If either or both commands are active, you can add to the keywords or descriptions provided. Also, although you cannot edit any of the publisher’s keywords and descriptions that appear in italics, you can edit or even remove any that appear in normal type. You can only add keywords if you have copied the catalog from the CD-ROM to a writable device.

Use your own keywords, for example, to reflect ways that you and your workgroup search for items and use the catalog. Add descriptions that record where and when you used an image, for which client, and so forth. To add your own keywords, select “Keywords...” from the Edit menu.

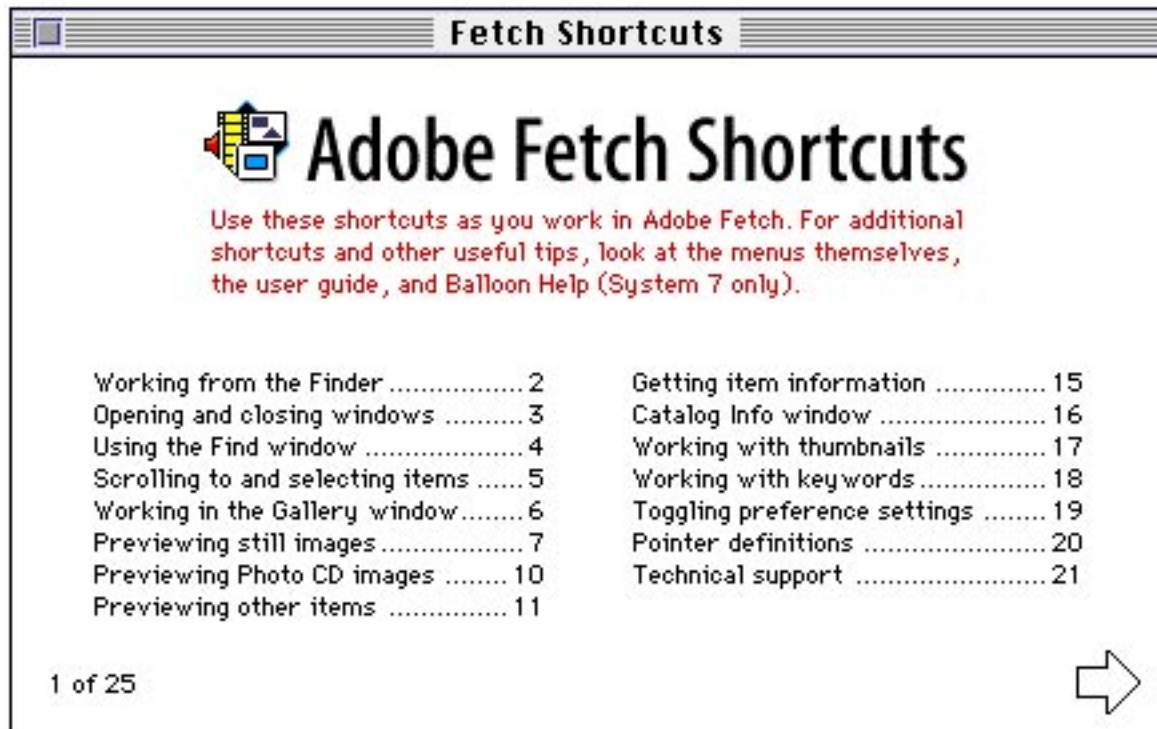


Learning More About Adobe Fetch

The fastest way to learn about Fetch is to open the catalog and start exploring. If you’ve ever used a library catalog of almost any kind, you already have a good idea of how to use Fetch. Start Fetch by double-clicking the catalog icon or by dragging the catalog icon over the Fetch application icon (if you are running System 7). (The first time you start the Browser, you’ll be prompted to enter your name and company name.)

For more information about using the catalog, help is available in two forms:

- If you are running System 6, take a look at “Fetch Shortcuts,” using the command located on the Apple menu. You’ll find these screens helpful in providing a quick reference to Fetch as you work.
- If you are running System 7, “Fetch Shortcuts” is on the Apple Help menu. You’ll also find extensive Balloon Help about nearly every menu, command, and dialog box option. We recommend that you take a few minutes to turn Balloon Help on and explore Fetch before you begin using the catalog.



Miscellaneous Information

You should also be aware of the following guidelines and methods to avoid any problems when using Fetch:

Running Fetch

The minimum amount of memory you should allocate to Fetch is 1900 KB. Running Fetch with this amount of memory or less, however, may cause problems with some large files that require more memory.

Transferring Images Into PageMaker 5.0 Documents

By using the Copy Reference command in Fetch, you can transfer images cataloged in Fetch into the PageMaker 5.0 Library Palette. See the PageMaker 5.0 documentation for information on how to use the Library Palette. PageMaker 5.0 lets you transfer the following file types from Fetch into its Library Palette:

- edtp (PICT-based Edition)
- edtt (text-based Edition)
- EPSF (Encapsulated Postscript)
- PCDI (Kodak photo CD image)
- PICT
- PNTG (MacPaint file)
- TIFF

Printing

When printing thumbnails on a QMS 100/30 printer, you need to use the LW 8.0 driver to get the correct printing area.

When printing thumbnails on a QMS 230 printer, you may find that the printing area is incorrect with LW 7.1.x and 8.0 drivers. The best result is with the 8.0 driver in the landscape setting.

To avoid an incorrect printing area when printing on Tektronix IIIPXi or SDX printers, use the Phaser paper settings (when provided) in the Page Setup dialog box.

If errors appear when printing thumbnails with the LW 7.1.x drivers, try using the 8.0 driver.

When you print thumbnails with the Graphic Smoothing option turned on, horizontal white lines may appear on the printed thumbnails.

If you are printing very large images with the Print Actual Images option turned on, then you may need to allocate more memory to Fetch.

Other Information

The Macintosh SE computer does not support QuickTime. Therefore, movies and sounds cannot be viewed with Fetch on Macintosh SEs. Instead, a Fetch Error thumbnail appears when you catalog movies and sounds with an SE.

If you are running Fetch on a Macintosh with a Radius Rocket card and you have 8MB or less of memory, Fetch can hang when cataloging items. Increase Fetch's memory allocation to avoid this situation.